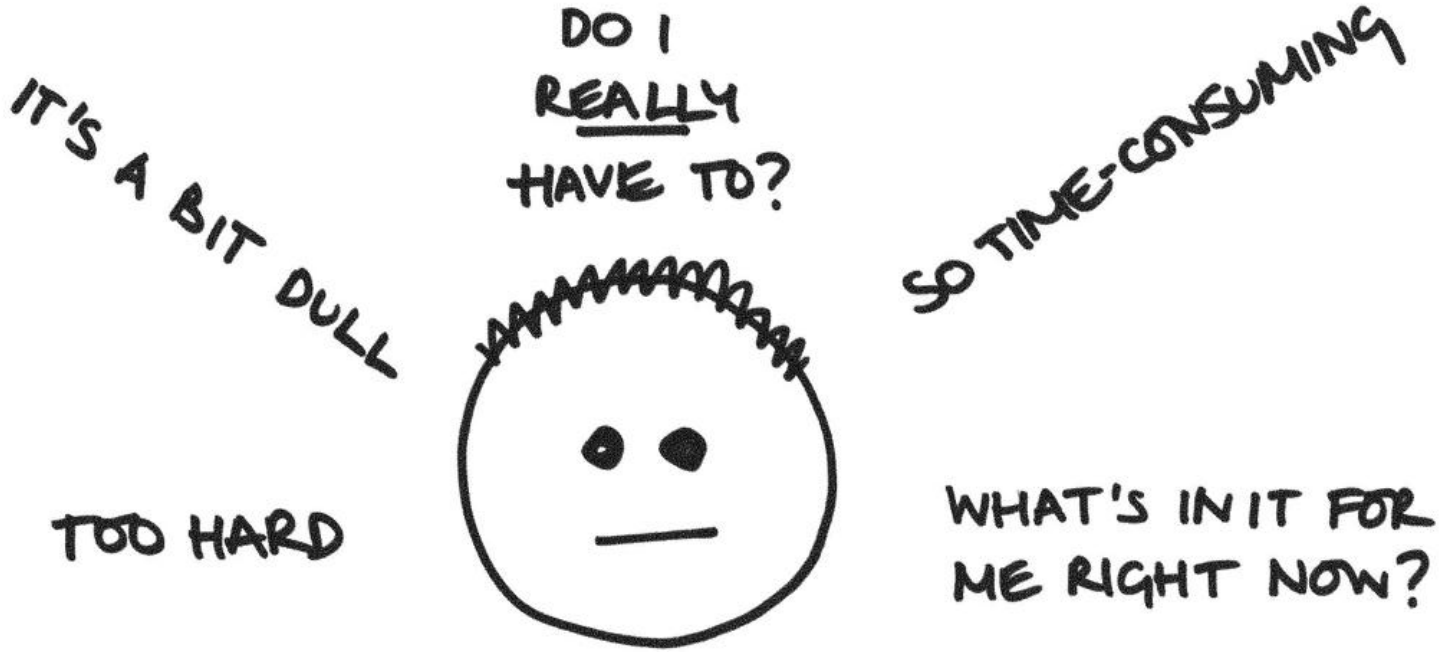


SIMPLE SEISMIC DATA MANAGEMENT



**Data Management
is
HARD**

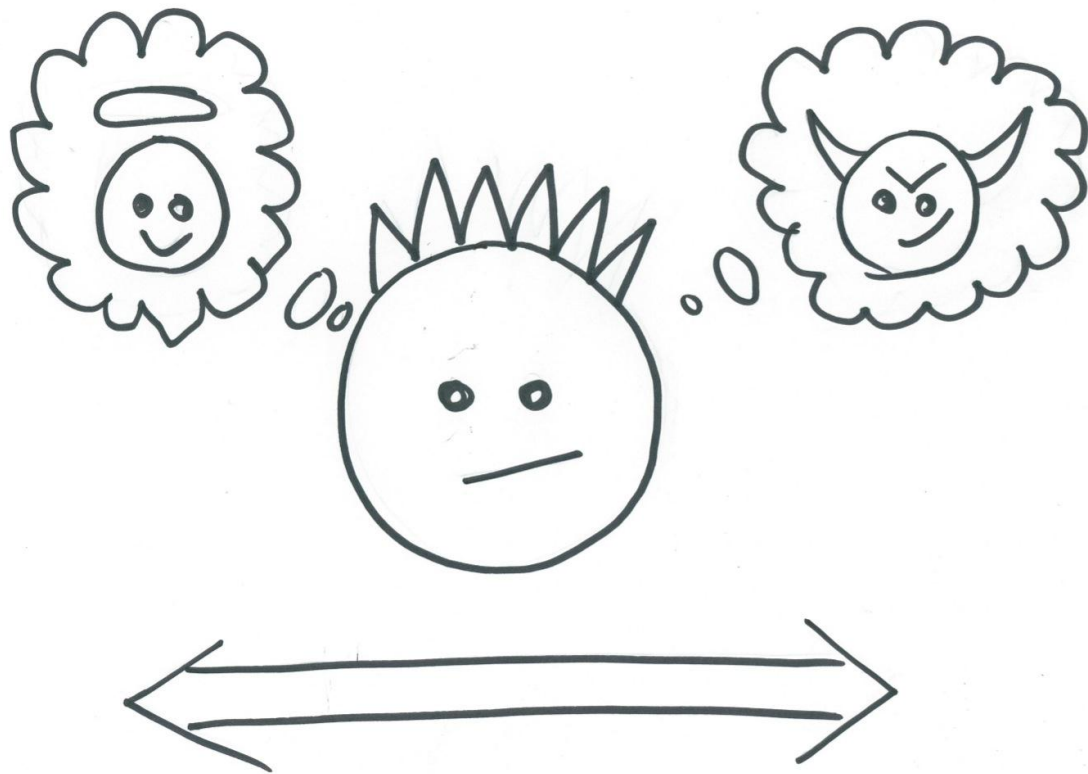


Users struggle to participate...

Conflicted users tend to make poor choices

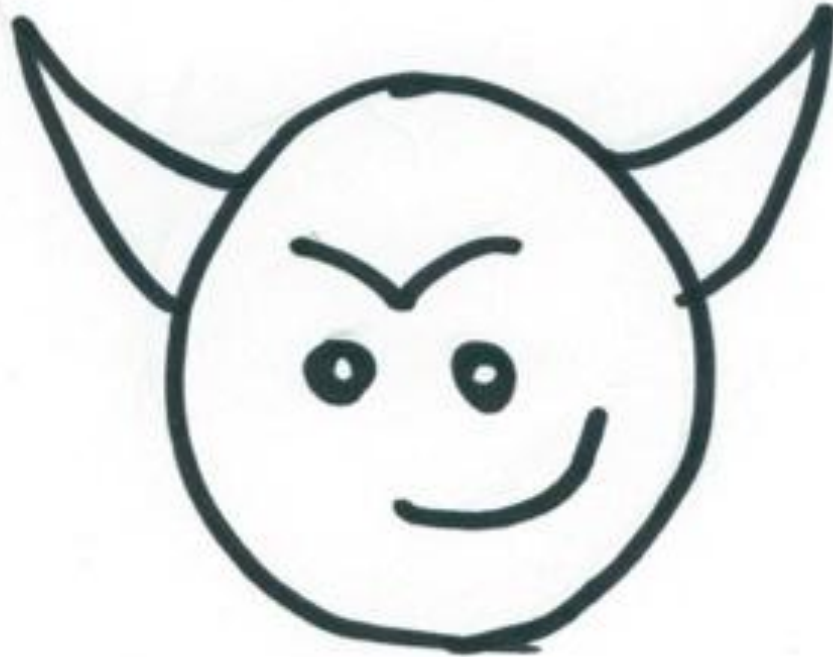
For example...

- Loading new data straight into applications without QC'ing first
- Saving copies of projects to local hard disks
- Skipping QC of dataset geometry
- Keeping original copies of data in desk drawers



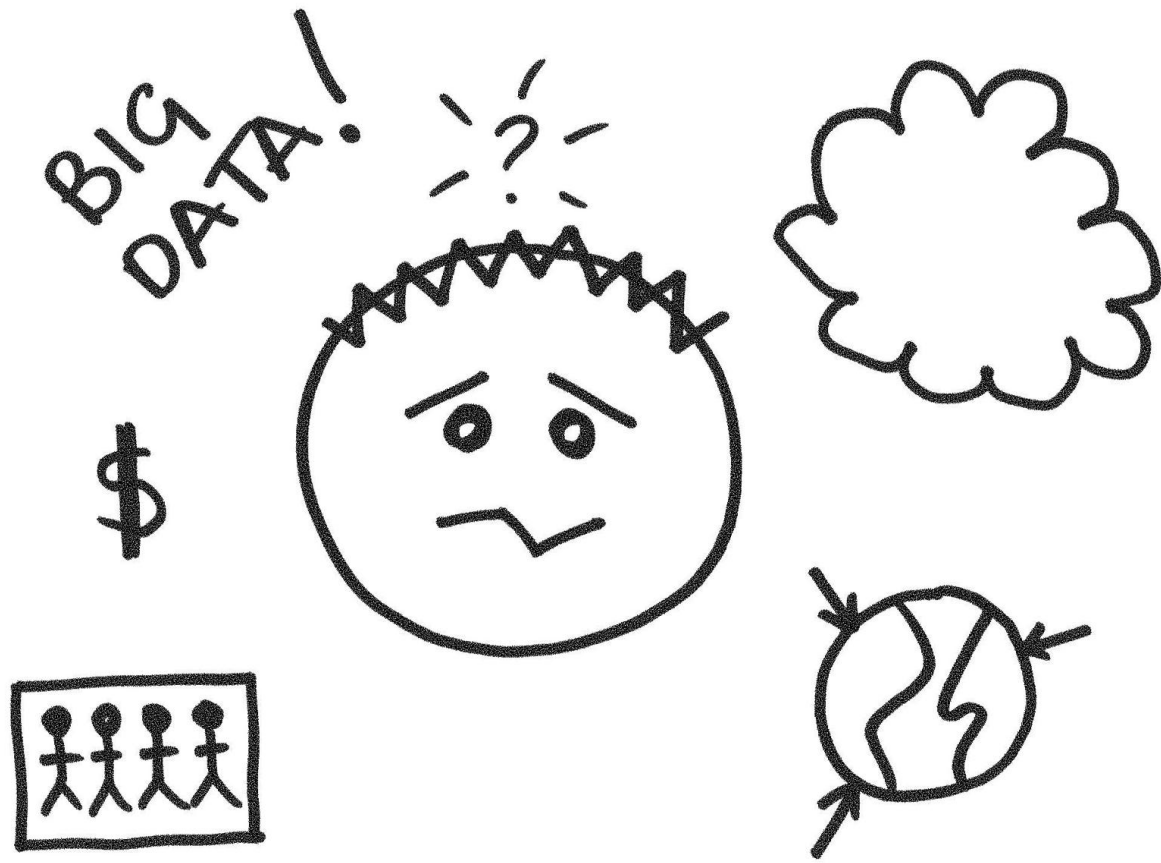
**Which way
will your
users go?**

Choosing the wrong path...



is easy!

**We can't
carry on
like this!**



FUSE IM:

Our software solves

HARD problems

XStreamline™

XStreamline provides simple tools to make data management quick and easy to see results fast

- Loading and QC'ing new datasets takes a fraction of the time
- Data is validated before being used
- All data is saved in one easily accessible place
- Changes made to data are documented automatically
- Governance becomes something that just 'happens'

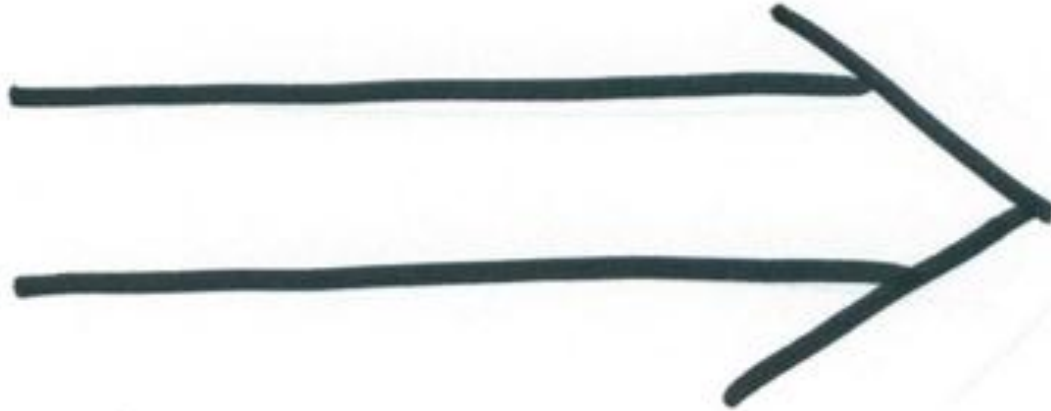
Now, choosing the right path



is easy!

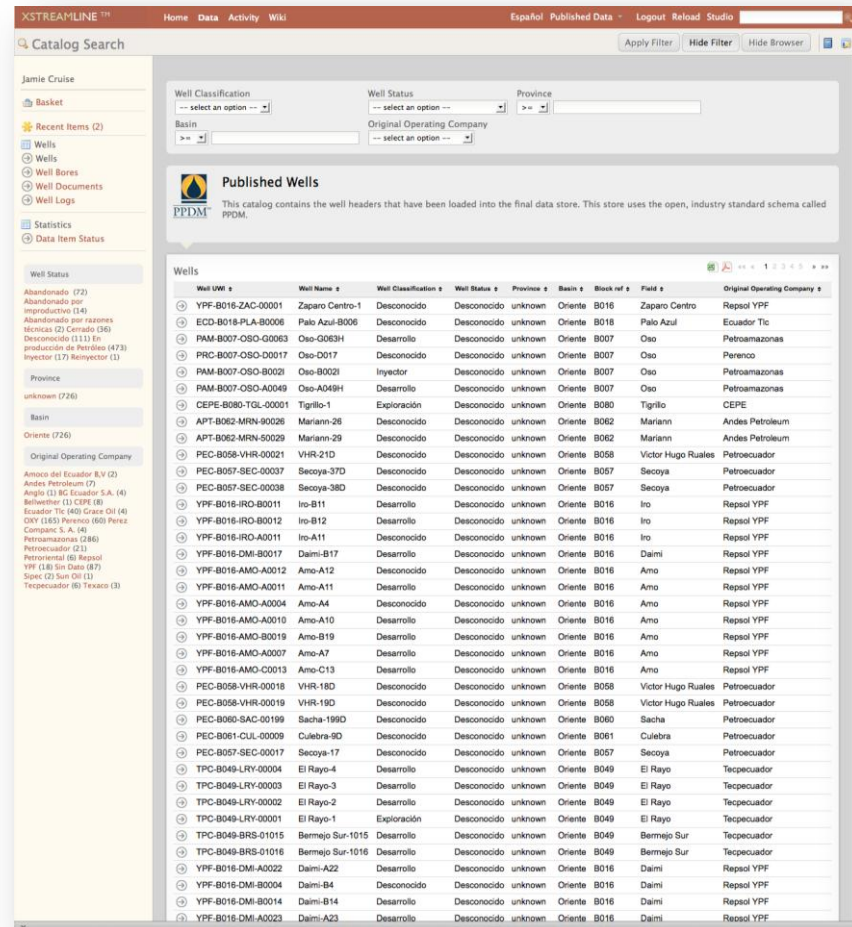
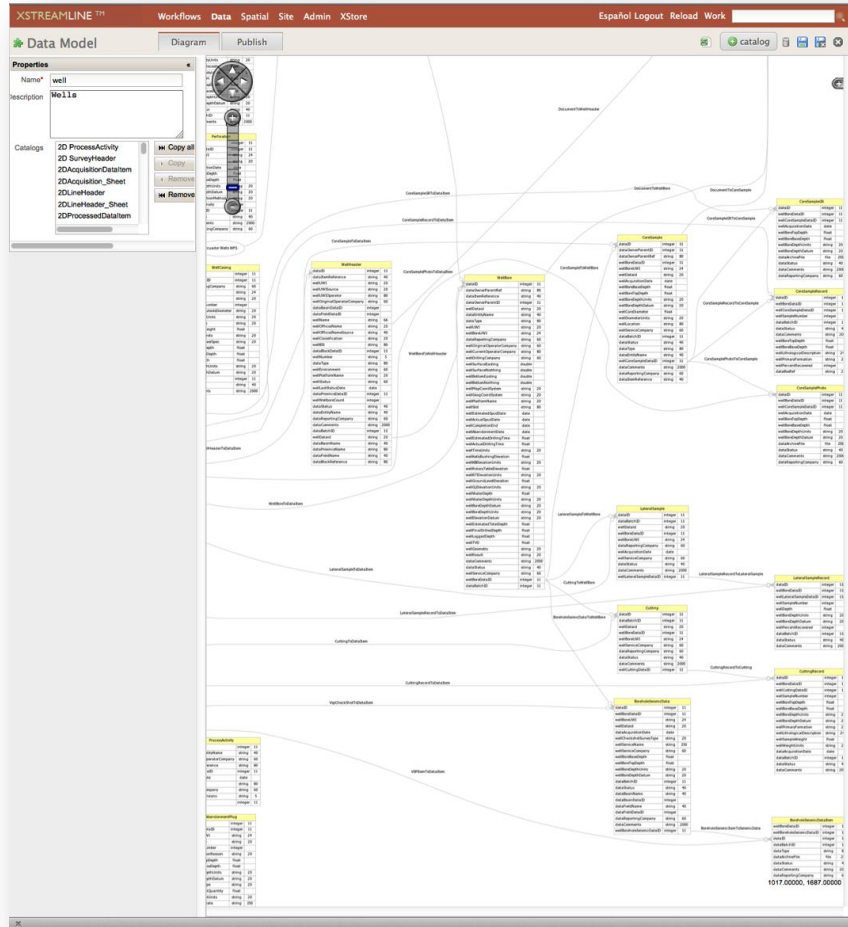
XStreamline Workflows

make things better



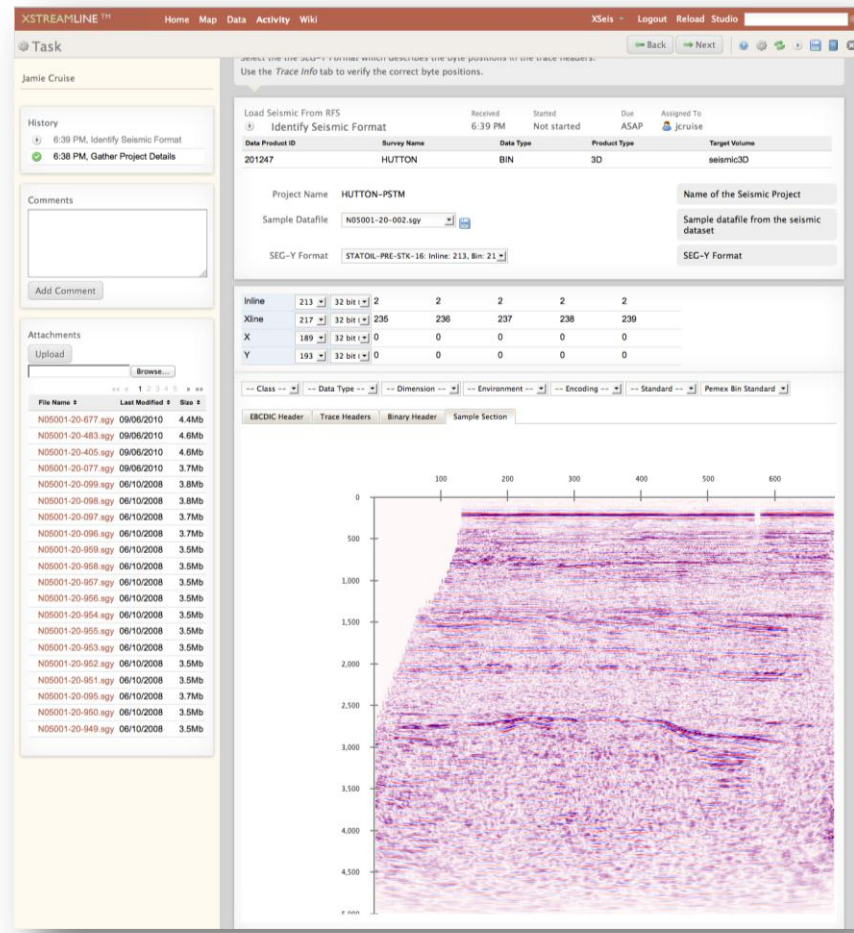
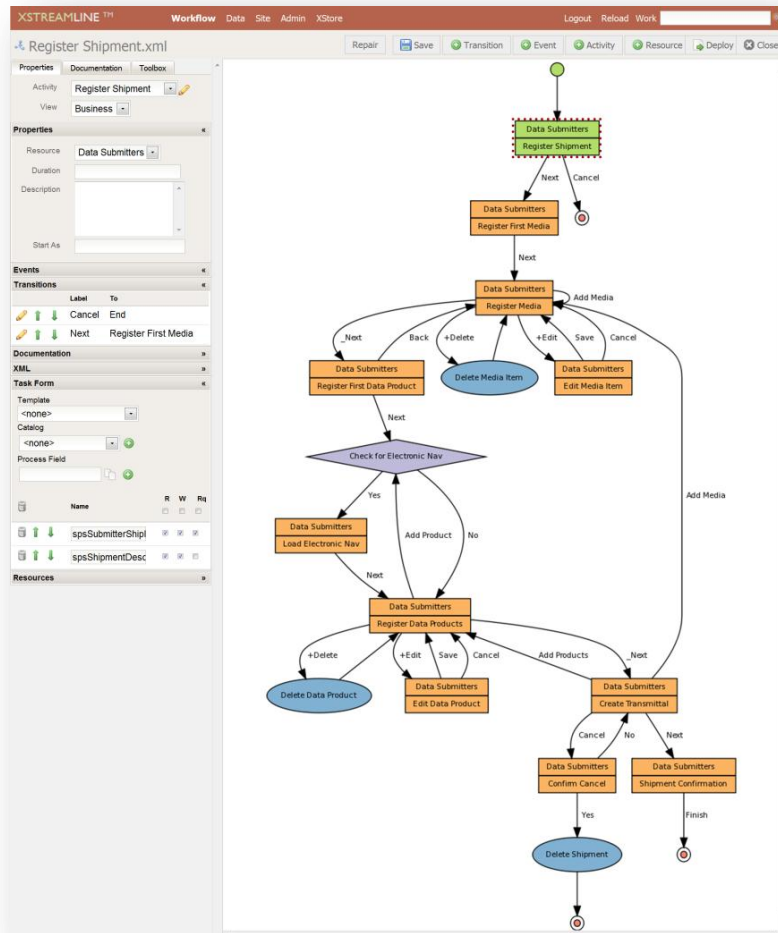
...with the power of



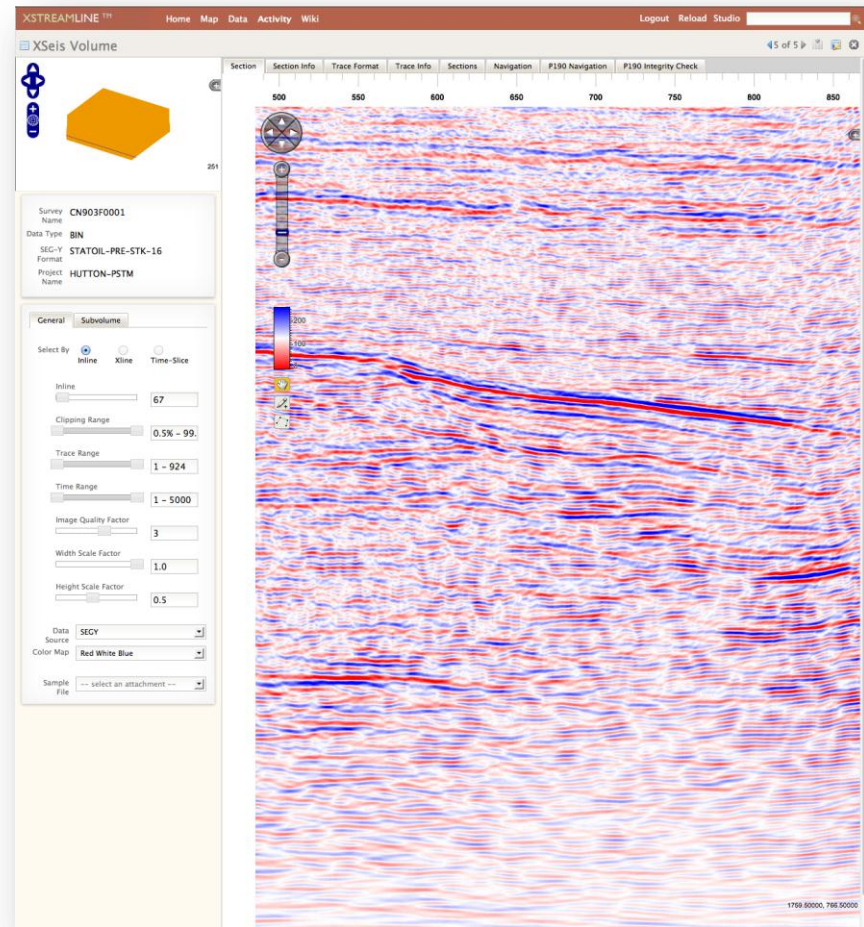
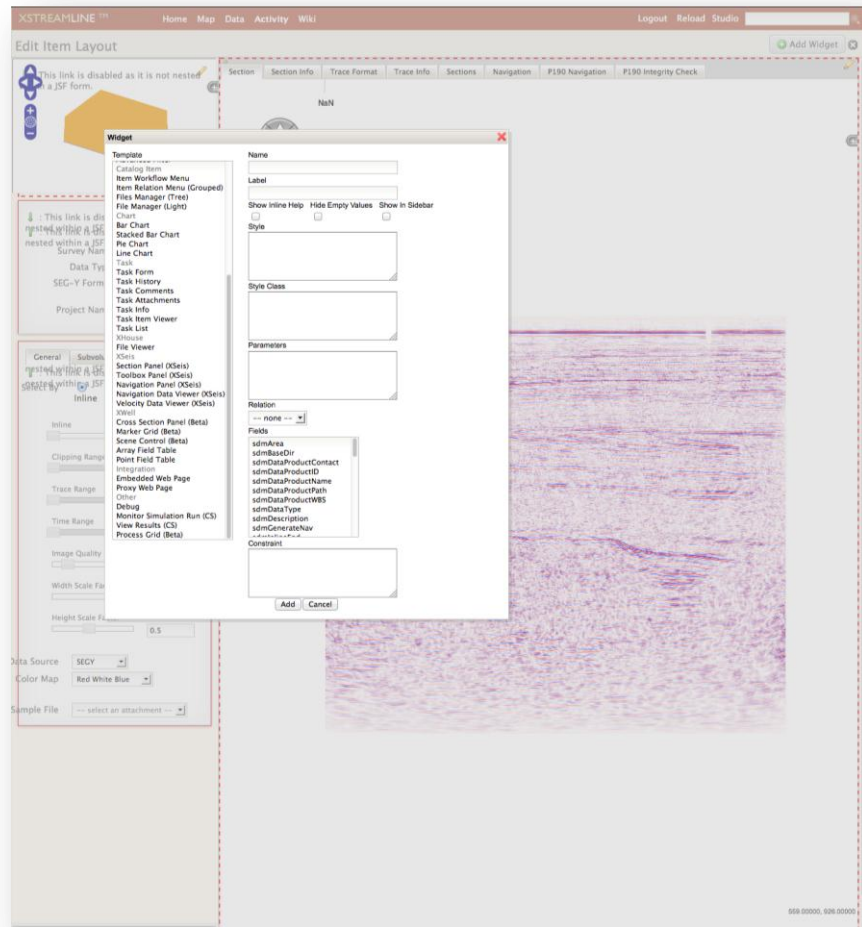


Comprehensive data models for products being managed





Workflow deployment for managing information



Context-rich views of data

XSTREAMLINE™ Workflows Data Spatial Site Admin XStore Español Logout Reload Work

Discover Server Discover Publish

Server Name Ecuador Map Service

General Info

Version 1.1.1
 Name OGC.WMS
 Title WMS_Ecuador_Cartografía Base_escalas_nacional
 Online Resource <http://www.geoportalig.mib.gob.ec:80/nacional/wms>
 Abstract Servicio WMS de cartografía base a escala nacional (1:1'000.000) del Instituto Geográfico Militar de Ecuador
 Keywords WFS, WMS, GEOSERVER, Google, Earth, IGM, Ecuador

Contact Details

Contact Person Edison Bravo
 Contact Instituto Geográfico Militar
 Organisation
 Contact Position Evaluador Geográfico
 Contact Address Seniergues 64-676 y Gral. T. Paz y Miño
 Quito (Pichincha)
 17 01 2435 - Ecuador
 Contact Telephone 593 2 3975100
 Contact Fax 593 2 3975191
 Contact Email edison.bravo@mail.igm.gob.ec

Access Conditions

Fees none
 Constraints none

Available Requests

GetCapabilities application/vnd.ogc.wms_xml
 Get <http://www.geoportalig.mib.gob.ec:80/nacional/wms?SERVICE=WMS&Post>
 GetMap image/png, application/atom+xml, application/openlayers, application/pdf, application/rss+xml, application/vnd.google-earth.kml+xml, application/vnd.google-earth.kmz, image/geotiff, image/geotiff8, image/gif, image/jpeg, image/png8, image/svg+xml, image/tiff, image/tiff8
 Get <http://www.geoportalig.mib.gob.ec:80/nacional/wms?SERVICE=WMS&GetMap>
 GetFeatureInfo text/plain, text/html, application/vnd.ogc.gml
 Get <http://www.geoportalig.mib.gob.ec:80/nacional/wms?SERVICE=WMS&GetFeatureInfo>
 Post <http://www.geoportalig.mib.gob.ec:80/nacional/wms?SERVICE=WMS&Post>
 DescribeLayer application/vnd.ogc.wms_xml
 Get <http://www.geoportalig.mib.gob.ec:80/nacional/wms?SERVICE=WMS&DescribeLayer>
 GetLegendGraphic image/png, image/jpeg, image/gif
 Get <http://www.geoportalig.mib.gob.ec:80/nacional/wms?SERVICE=WMS&GetLegendGraphic>

Exceptions

application/vnd.ogc.se_xml

User Defined Symbolization

<http://localhost/studio/mapServer/capabilities.seam?entityId=3&id=151>

XSTREAMLINE™ Home Map Data Activity Wiki Español Master Data Management Logout Reload Studio

Ecuador 100 km Scale: 1/3466752 Ext: -9392791.387, -813450.994, -7983504.082, 215085.659 Area: 54114.334 km² Coord: -8542510.07357, -131021.20535

Basket

Culture

- ☒ Ecuador Base
- ☐ Capital Provincial
- ☐ Cabecera Cantonal
- ☐ Cabecera Parroquial
- ☐ Recinto

Rios

- ☒ rio_doble
- ☒ rio_torrente
- ☐ Rio Torrente

Petroleum Info

- ☒ Bloques
- ☒ Campos
- ☒ Pozos
- ☐ Lago Laguna
- ☐ Sísmica 2D
- ☐ Sísmica 3D

Wells on Map

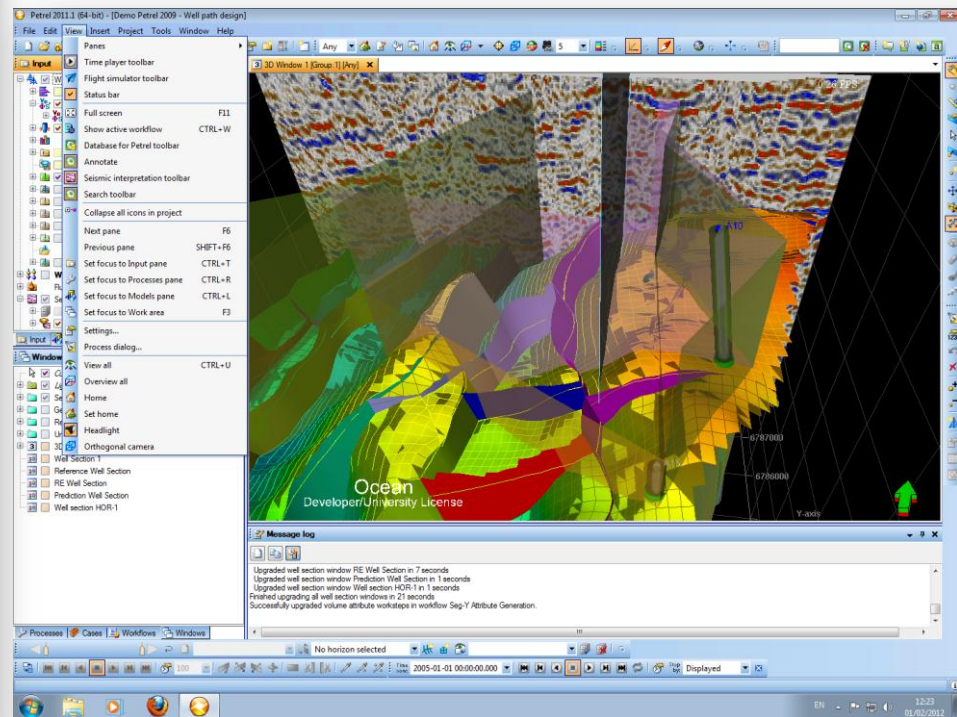
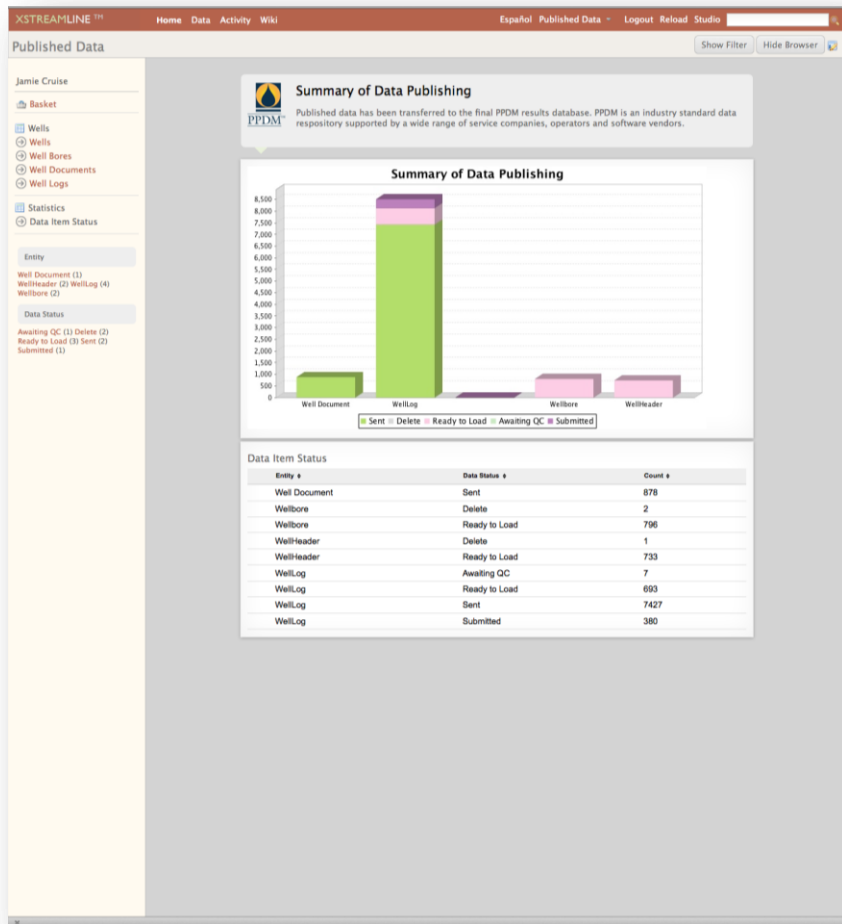
Well Name	Common Well
ANGEL NORTE A001	ANNA-001
ANGEL NORTE A002	ANNA-002
BIGUÑO A001	BOHA-001
CHONTAYACU A001	CHTA-001
CONCORDIA A001	CNCA-001
CONCORDIA A002	CNCA-002
CONCORDIA A003	CNCA-003
CONCORDIA A004	CNCA-004
CONCORDIA A005	CNCA-005
CONCORDIA A007	CNCA-007

Search Results

Wells on Map Well Name: CHONTAYACU A001 Common Well: CHTA-001 Well UWI: ECB185000100 X Surface: 276852.0 Y Surface: 9982467.0 Observed: si coinciden Long Nam f: CHONTAYACU A001 Common W f: CHTA-001 Uwi f: ECB185000100 Original Operating Company: UNKNOWN Wellname: A001 Well Number: A001 X Surf: 1: 276852.0 Y Surf: 1: 9982467.0 X Bottom: 276852.00 Y Bottom: 9982467.00 Elevation: KB Elevatio: 1: 1082.0 Total Dept: 10490.0 Field: CHONTAYACU Basin: ORIENTE ORELLANA Country: ECUADOR Initial CI: UNKNOWN Initial SI: UNKNOWN Well Classification: UNKNOWN Well Status: UNKNOWN County: PA Block ref: BLOQUE-18 Prod Name: PAD A Well Geom: DIRECCIONAL Borehole T: Original-H

Publish data to a spatially enabled search engine



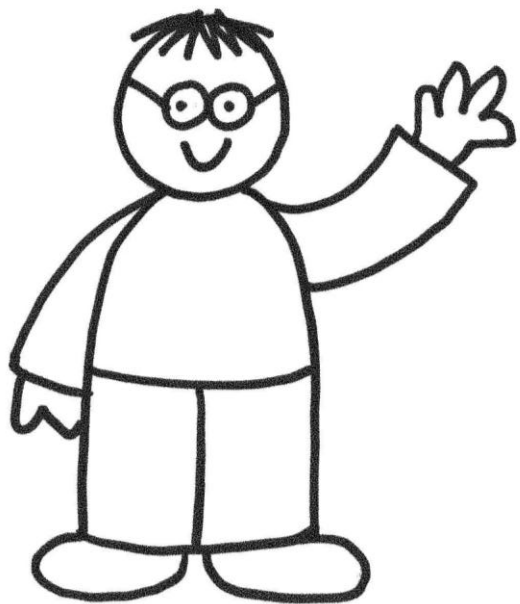


Start loading and distributing data to your users!



...so *this* is what the
future looks like...

SIMPLE **(and easy)** **SEISMIC** **DATA MANAGEMENT**



For a live demo, email

DAVID.HOLMES
@ FUSEIM.COM

Or call us on +44 1483 762816



FUSE IM

**For cloud and workflow-enabled
upstream data management**

www.fuseim.com

FUSE IM
EDGE IN